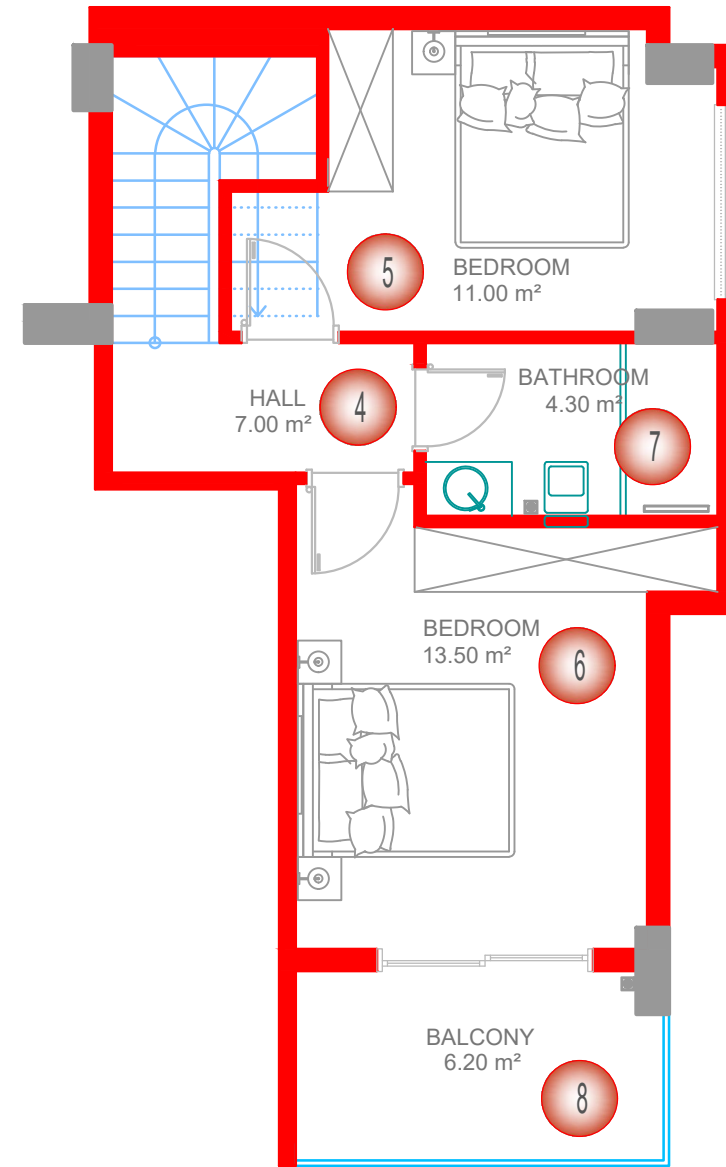
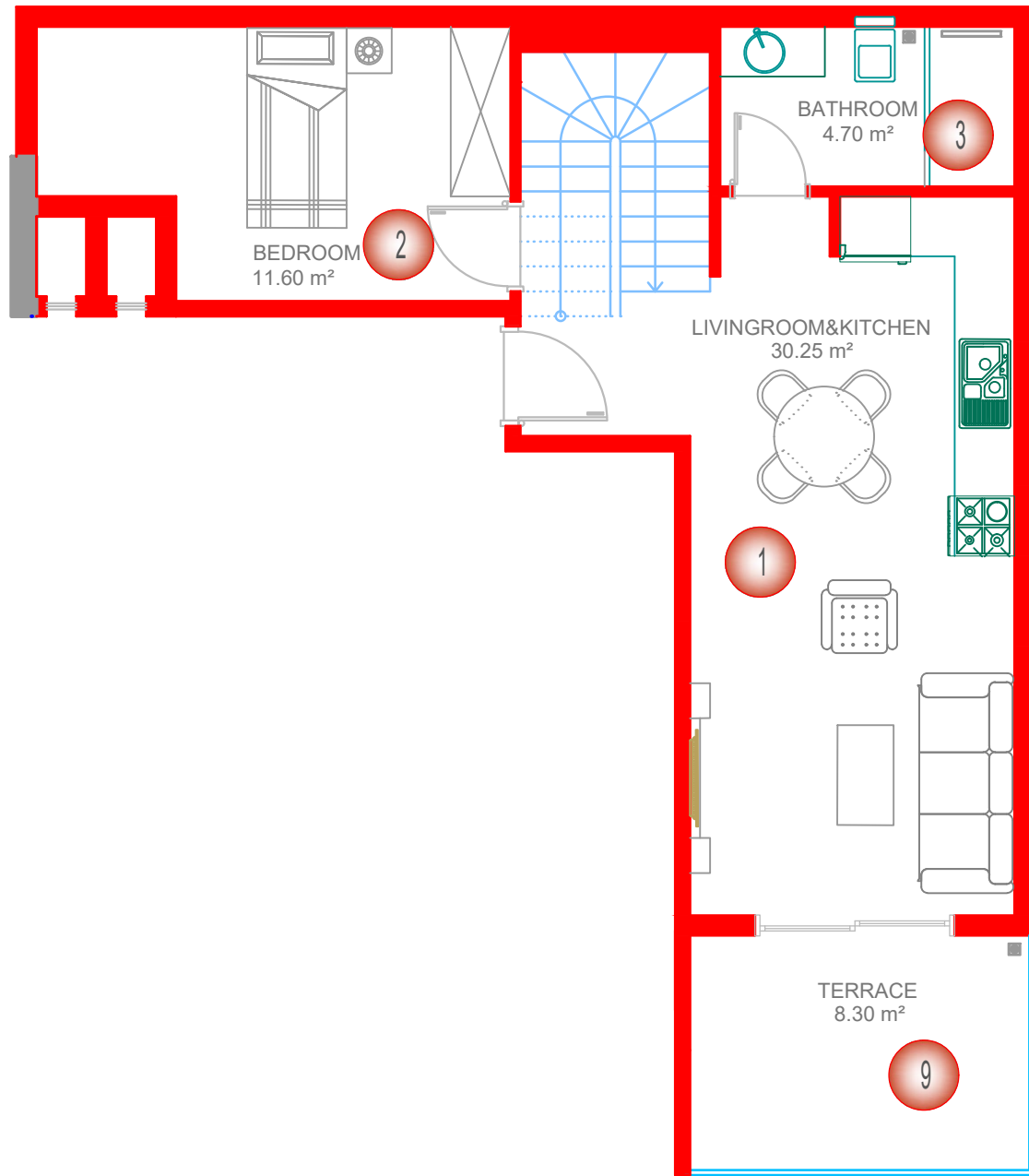


3+1 PLAN

(20)

3+1



1 - LIVINGROOM&KITCHEN	: 30.25 m ²
2 - BEDROOM	: 7.00 m ²
3- BATHROOM	: 4.70 m ²
4- HALL	: 7.00 m ²
5- BEDROOM	: 11.00 m ²
6 - BEDROOM	: 13.50 m ²
7- BATHROOM	: 4.30 m ²
8- BALCONY	: 6.20 m ²
9- TERRACE	: 8.30 m ²
WALL	: 20.00 m ²
TOTAL AREA	: 116.85 m ²

